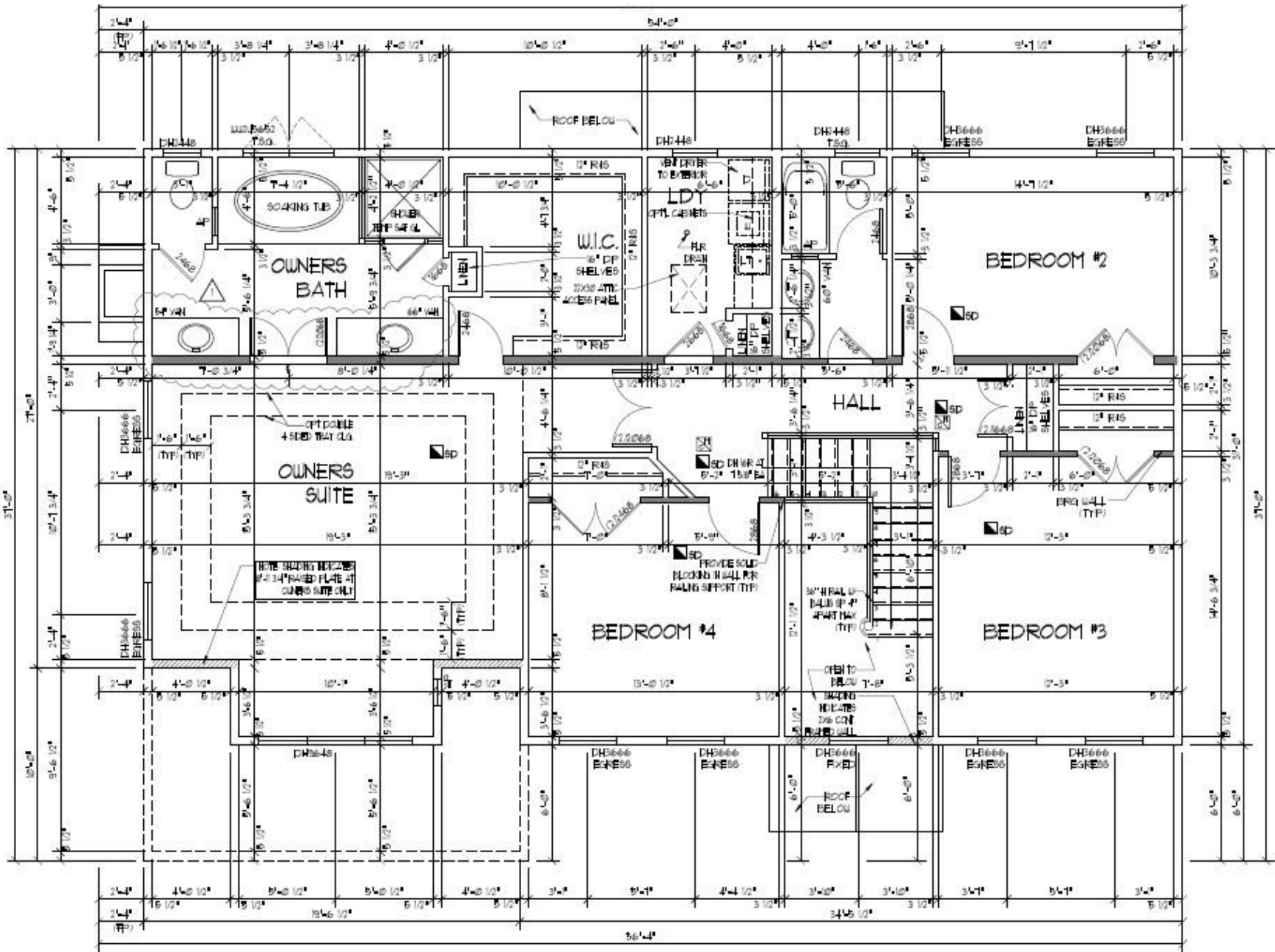


FIRST FLOOR PLAN

- NOTES:
- 1) VINCO DOUBLE-HING WINDOWS USED THROUGHOUT. INSTALLED & FLASHED PER MFG'S SPECS (UNO)
 - 2) ALL SMOKE DETECTORS INTERCONNECTED W/ BATTERY BACKUP



SECOND FLOOR PLAN

NOTES:

- 1) VINICO DOUBLE-HING WINDOWS USED THROUGHOUT (UNO)
- 2) ALL SMOKE DETECTORS INTERCONNECTED BY BATTERY BACKUP